

MULTI-CATCH™ Mouse Traps

MULTI-CATCH™

- Compatible with Catchmaster® #72TC or #72TCUS glueboards
- Smooth inner rim makes glue board replacement quick and easy
- Black and white finishes provide discreet color options
- Powder-coated units are easier to clean & rust-resistant
- Perfect for use in schools, medical facilities or other sensitive accounts

PRIVATE LABEL OPTIONS AVAILABLE

	SOLID LID	CLEAR WINDOW LID
STANDARD	 <p>#612MCS</p>	 <p>#612MC</p>
BLACK	 <p>#612MCS-BK</p>	 <p>#612MC-BLK</p>
WHITE	 <p>#612MCS-WH</p>	 <p>#612MC-WHT</p>

Item
SOLID LID #612MCS #612MCS-BK #612MCS-WH
WINDOW LID #612MC #612MC-BLK #612MC-WHT
Packed
12 traps per case
Trap Size
10.25 x 6 x 1.75"



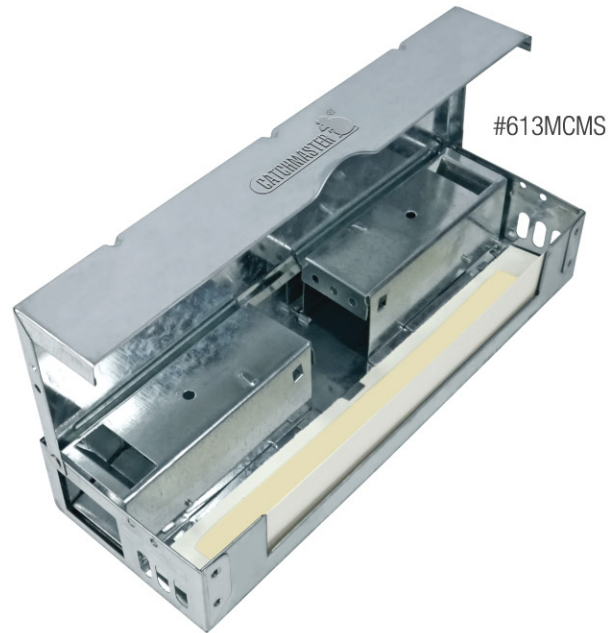
FOR MORE INFORMATION CONTACT YOUR REGIONAL SALES REPRESENTATIVE
catchmasterpro.com | info@catchmasterpro.com | 1.800.458.7454

MULTI-CATCH™ Mouse Traps

MULTI-CATCH™ MINI

- Economical / Reusable
- Narrow profile multi-catch
- Use with Catchmaster® 72TC3 glue boards
- Rolled edges and easy-access panel
- Private label options

Item
#613MCMS
Packed
12 per case
Size
10.25 x 3.625 x 1.75"



SLIM™

- Economical / Reusable
- Narrow profile multi-catch
- Durable polycarbonate construction
- Removable components for cleaning
- Use with Catchmaster® 72TC3 glue boards

Item
#614
Packed
12 per case
Size
2.5 x 2.25 x 16"



FOR MORE INFORMATION CONTACT YOUR REGIONAL SALES REPRESENTATIVE
catchmasterpro.com | info@catchmasterpro.com | 1.800.458.7454